

EPIRB 3.M20

Primary Li-MnO₂ battery

9 V lithium manganese dioxide battery for EPIRBs

The EPIRB 3.M20 battery is based on Saft M20 D-size spiral cells with high current and pulse capability. It is ideally suited for the demands of EPIRBs (Emergency Position Indicating Radio Beacons).

Benefits

- High drain / high pulse capability
- High voltage response, stable even after long dormant periods
- No voltage delay
- Low self-discharge compatible with long operating life (less than 1 % per year after 1 year of storage at 20 °C)
- High energy density
- Light weight
- Wide operating temperature range
- Superior resistance to corrosion
- Easy integration into EPIRBs

Key features

- 3 M20 cells in 3S1P configuration
- Safe, hermetic cell construction with glass-to-metal seal, safety vent and stainless steel container
- Non-pressurized cells
- Protection against abusive conditions with integrated polyswitch and diode
- Centered tube for secure mounting in EPIRBs
- Versions without centered tube and different cable configurations available on request
- Restricted for transport (class 9)
- Manufactured in Germany

Designed to meet all major quality, safety and environmental standards

- Safety: UL 1642 (File MH 12609)
- Transport: UN 3090 and UN 3091
- Quality: ISO 9001, Saft World Class Continuous program
- Environment: ISO 14001, RoHS and REACH compliant

Typical applications

- EPIRB (Emergency Position Indicating Radio Beacon) COSPAS-SARSAT, 406 MHz



Electrical characteristics

Typical capacity (at +20°C / +68°F, 150 mA discharge rate, 6.0 V cut-off voltage) ⁽¹⁾	12.6 Ah
Open-circuit voltage	9.9 V
Nominal voltage (under 1 mA at +20°C)	9.0 V
Nominal energy (at 150 mA, +20°C, 6.0 V cut-off voltage)	108 Wh
Maximum discharge current (continuous and pulse) ⁽²⁾	2 A

Physical characteristics

Length	69.0 mm / 2.72 in
Width	64.3 mm / 2.53 in
Height	65.0 mm / 2.56 in
Typical weight	380 g
Terminals	Optional
Battery casing	Shrink sleeve

Operating conditions

Operating temperature range	- 40°C / + 72°C (- 40°F / + 161°F)	
Storage temperatures	Recommended	+ 35°C (+ 95°F) max.
	Allowable ⁽³⁾	- 55°C / + 90°C (- 67°F / + 194°F)

References

Saft Part Number ⁽⁴⁾	443 2080 136
---------------------------------	--------------

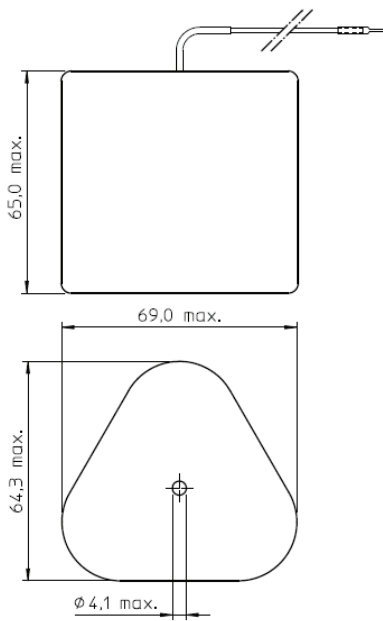
⁽¹⁾ Can vary depending on current drain, temperature and cut-off voltage.

⁽²⁾ Packs for higher currents are optionally available. Consult Saft.

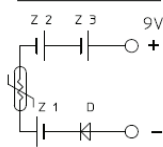
⁽³⁾ Long-time storage at high temperature may affect performance. Consult Saft.

⁽⁴⁾ The part numbers of modified versions (e.g. with terminals / without centered tube) may be different





CIRCUIT DIAGRAM



Built-in circuit protection elements

- Polyswitch preventing short-circuit / over-current and over-heating
- Charge protection diode

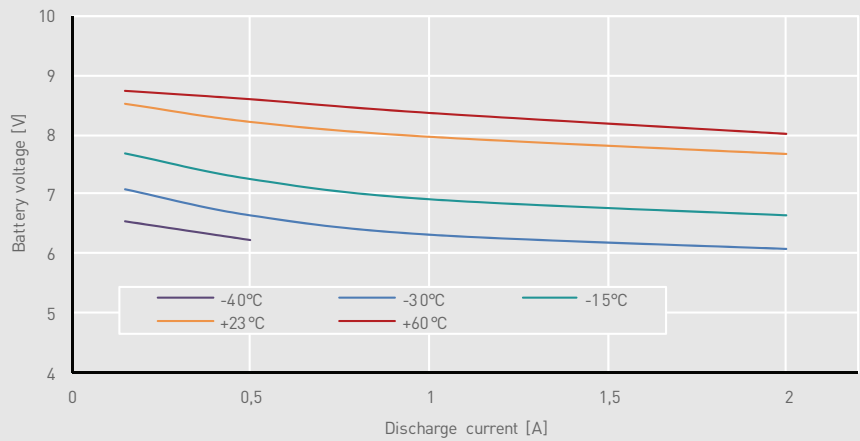
Storage

- The storage area should be clean, cool (preferably not exceeding +30°C), dry and ventilated

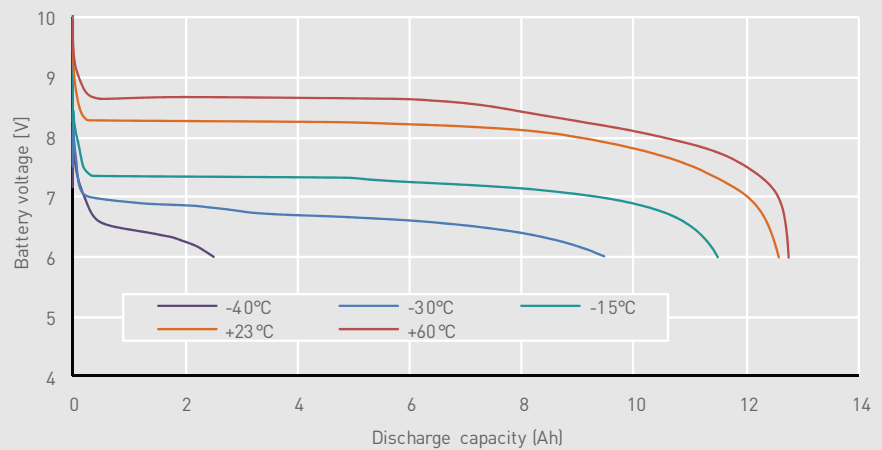
Warning

- Fire, explosion and burn hazard
- Do not charge, short-circuit, crush, disassemble, heat above +100°C (+212°F), incinerate, or expose cell contents to water

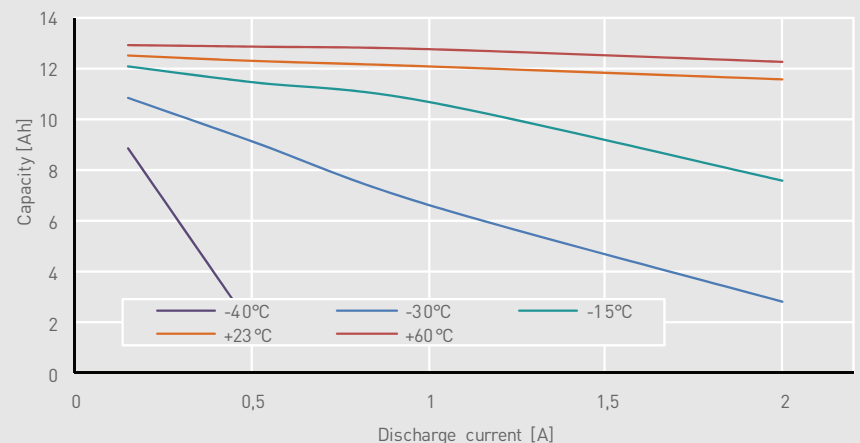
Voltage plateau vs. current and temperature (at mid-discharge)



Typical discharge profile vs. temperature under 0.5A



Capacity vs. current at various temperatures



Saft
 12, rue Sadi Carnot
 93170 Bagnolet
 France
 Tel.: +33 (0) 1 49 93 19 18
 Fax: +33 (0) 1 49 93 19 64
 www.saftbatteries.com

Friemann & Wolf
Batterietechnik GmbH
 Industriestr. 22
 63654 Büdingen—Germany
 Tel.: +49 (0) 6042 954 0
 Fax: +49 (0) 6042 954 190
 www.friwo-batterien.de

Doc N° 31131-2-0316
 Edition: March 2016
 Information in this document is subject to change
 without notice and becomes contractual only after
 written confirmation by Saft.
 Published by the Communication Department
 Photo credit: Saft