

# Xcelion®

## Communication box

COMMUNICATION BOX FOR EASY EVALUATION AND INTEGRATION OF SAFT'S XCELION® BATTERIES

Saft's communication box allows for seamless, out-of-the-box lab performance evaluation and cycling of the Xcelion® batteries. It enables functions such as battery monitoring, datalogging, and updating software.



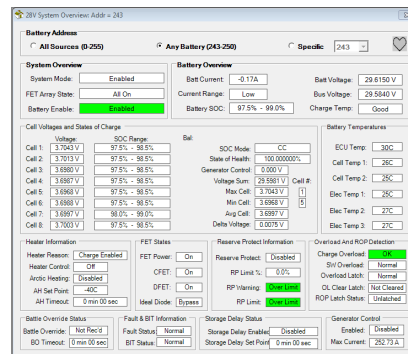
Xcelion® Mil-PRF-32565 communication box



Xcelion® communication box

### Key features

- Built-in CAN adaptor compatible with Windows PC USB interface; drivers available online
- Input and output connectors enable use during vehicle testing/evaluation/integration, allowing the GUI to datalog while in "snoop" mode
- Graphical User Interface (GUI) provides visual battery status including state-of-charge, state-of-health, voltage, current, and other diagnostic information
- Whether commanding the battery or simply monitoring an integration and test activity, the GUI application supports logging battery data on a PC to support troubleshooting and interface evaluation
- Interface box includes switches to operate the Xcelion® battery for all available CAN addresses
- Enables communication with Xcelion® over J1939 CAN Bus
- Designed to meet IP 65 enclosure rating



### Resources available

User manual

Reprogramming tools

Interface design description

Graphical user interface

### Saft part numbers

MIL-PRF-32565

209683

Xcelion® 6T and Xcelion® LEV

209887

### Benefits

- Accelerates vehicle/battery integration
- Simplifies trouble-shooting and evaluation of the Xcelion® battery
- Saves time and resources by providing a convenient interface tool set
- Allows for simple enabling and disabling of the Xcelion® battery

### Saft

26, quai Charles Pasqua  
92300 Levallois-Perret - France  
www.saftbatteries.com

Saft, a subsidiary of TotalEnergies SE  
S.A.S. au capital de 31 944 000 euros  
RCS NANTERRE 383.703.873